



GDB SERIES LED GARDEN LIGHTS

www.seekingled.com



130 lm/w 50W/60W 90*75°

GDB series led garden lights Simple appearance design, high stability. IP65 protection level and solid aluminum shell can withstand extreme weather and water impact. Tool-free maintenance opening for easy maintenance. Suitable for parks, villa courtyards, residential areas, both sides of the road, billboards, commercial pedestrian streets, tourist attractions, industrial parks, city squares, stations, high-speed railways, airports and other types of station squares, museums, exhibition halls, stadiums, Lighting in city squares and other places.



Product size:

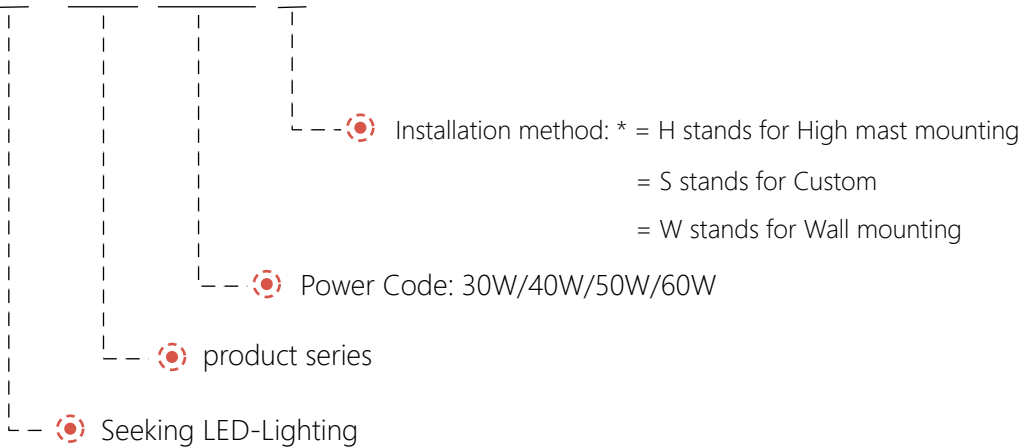


Parameter

Model NO.	Power (W)	Luminous flux 130lm/w
XJ-GDB*W-*	30 (Optional values)	3900
	40 (Optional values)	5200
	50 (Typical values)	6500
XJ-GDB60W-*	60	7800



XJ - GDB 50W - *



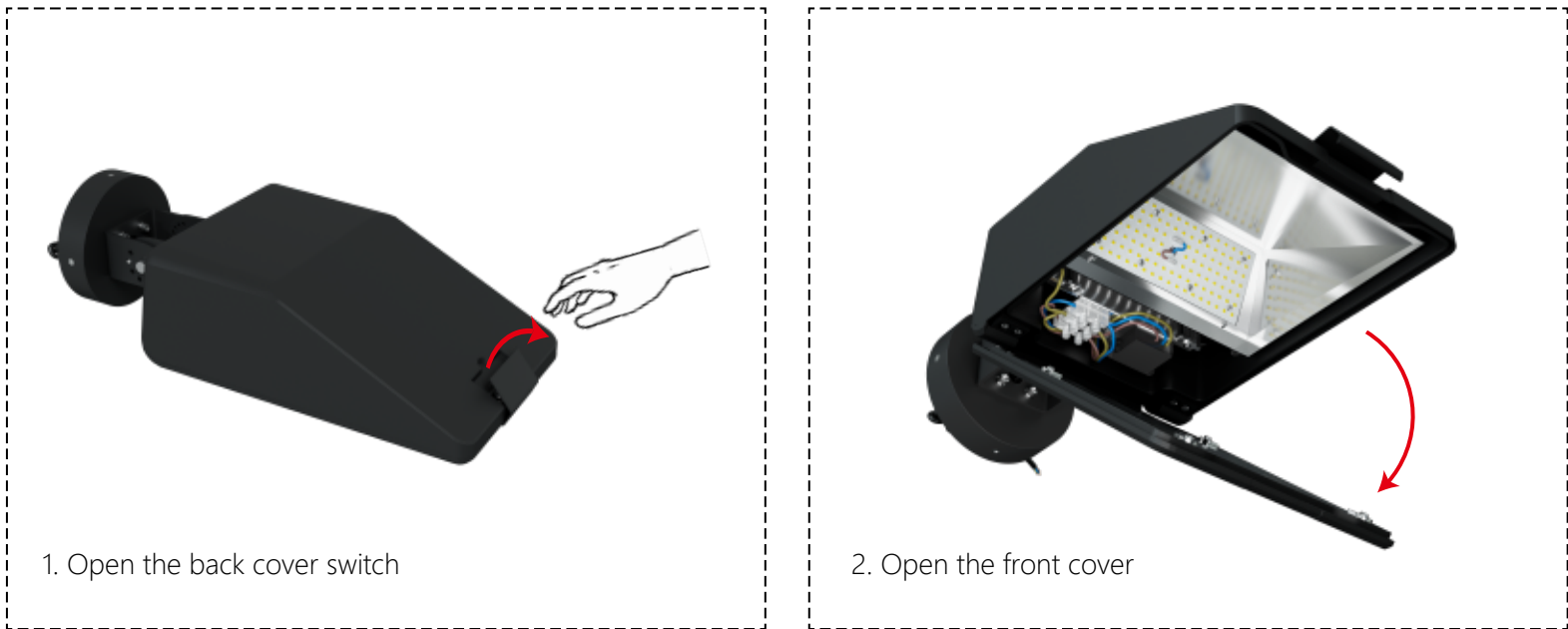
AC Input :	100-277V 50/60Hz
Brand of LED Driver :	MEAN WELL
Light Source :	2835
CRI Range :	Ra>80
CCT Range :	NW(4000K) CW(5700K) WW(3000K)(Optional) Dw(5000k)(Optional)
Light Efficiency :	130±5% Lm/W
Beam Angle :	90°75°
Housing :	Aluminum Alloy
Surge Protection :	4kV line-line 6kV line-earth
Waterproof :	IP65 & IK08
L80B20@25°C:	>100000H
PF:	≥0.95
THD:	<15%
Power Efficiency:	≥0.9
Certifications:	CE, CB
Warranty :	5 Years
Light body color:	Tiefschwarz (RAL 9005)



Dimmable

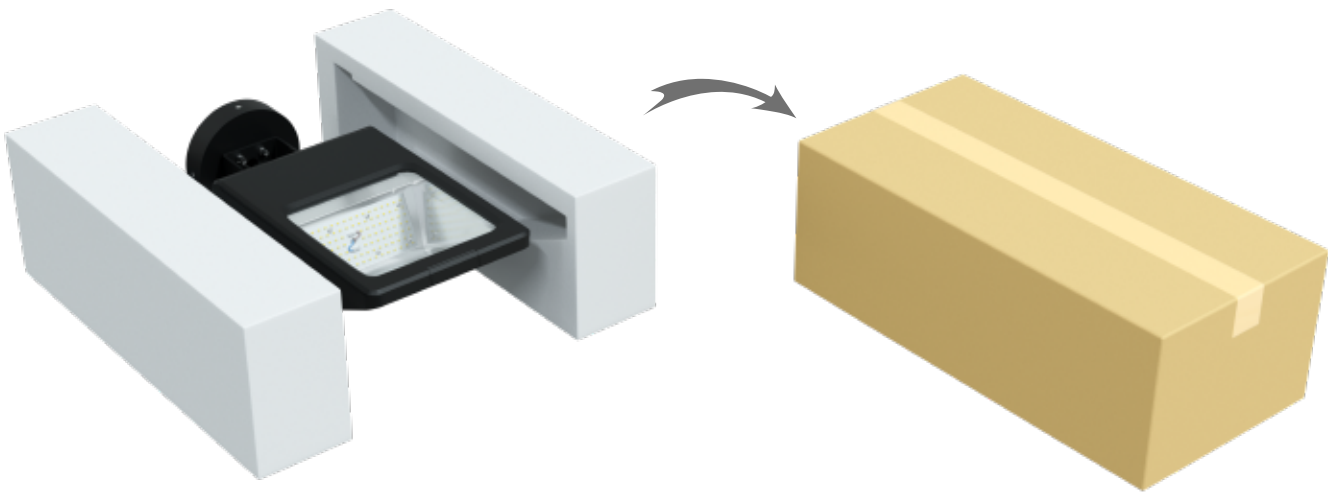
★ Above lumens based on 4000K Ra:80

Tool free maintenance opening :



✱ Note : Be sure to turn off the power before operation, and the operation must be performed by a professional electrician to avoid accidents!

Product Packaging :



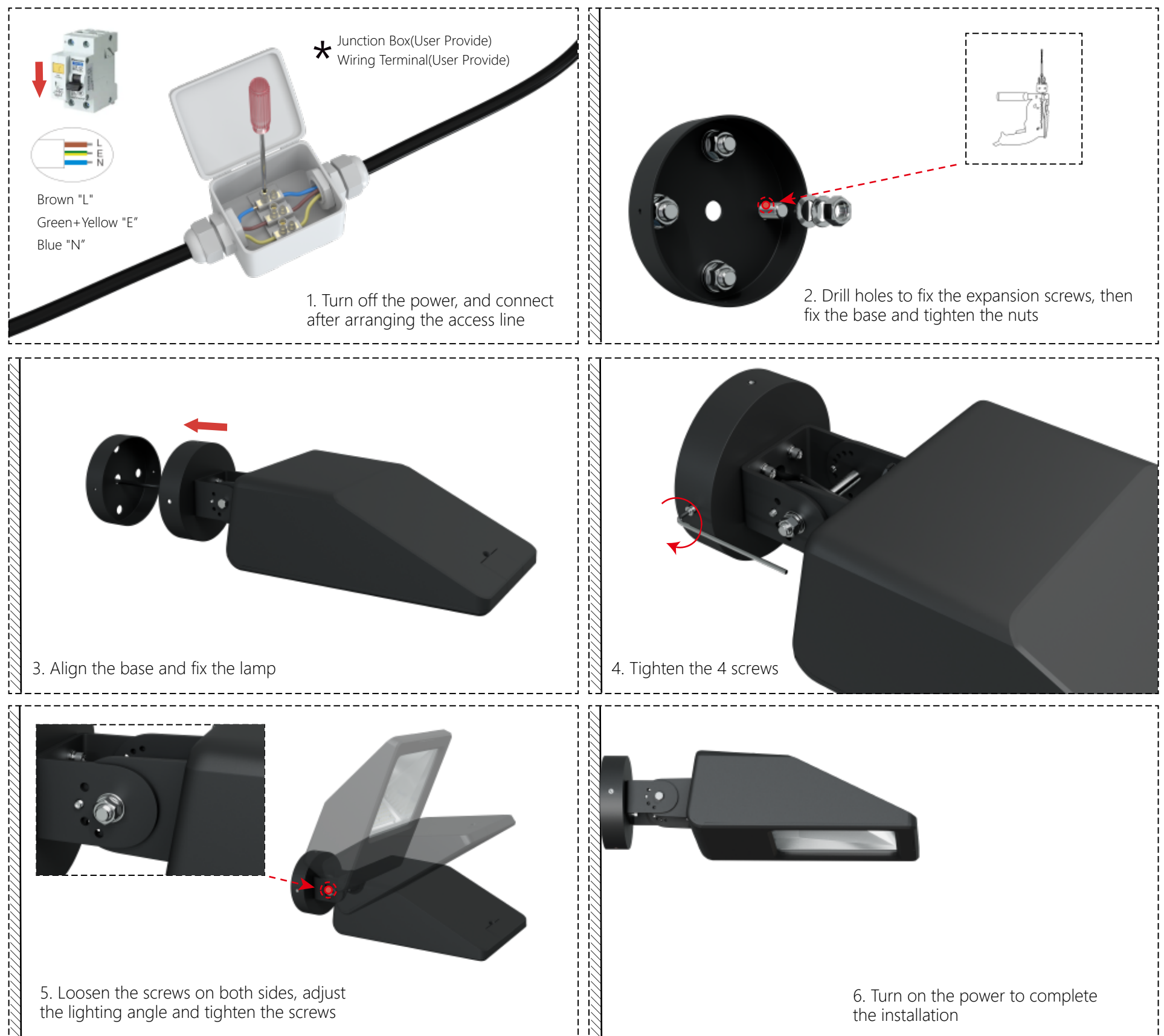
Model	Qty	N.W.(kg)	G.W.(kg)	Meas(mm)
XJ-GDB*W-H	1PC/ctn	5.05	6.15	524*268*190
XJ-GDB*W-W				
XJ-GDB*W-S				

High mast mounting Installation Instructions:



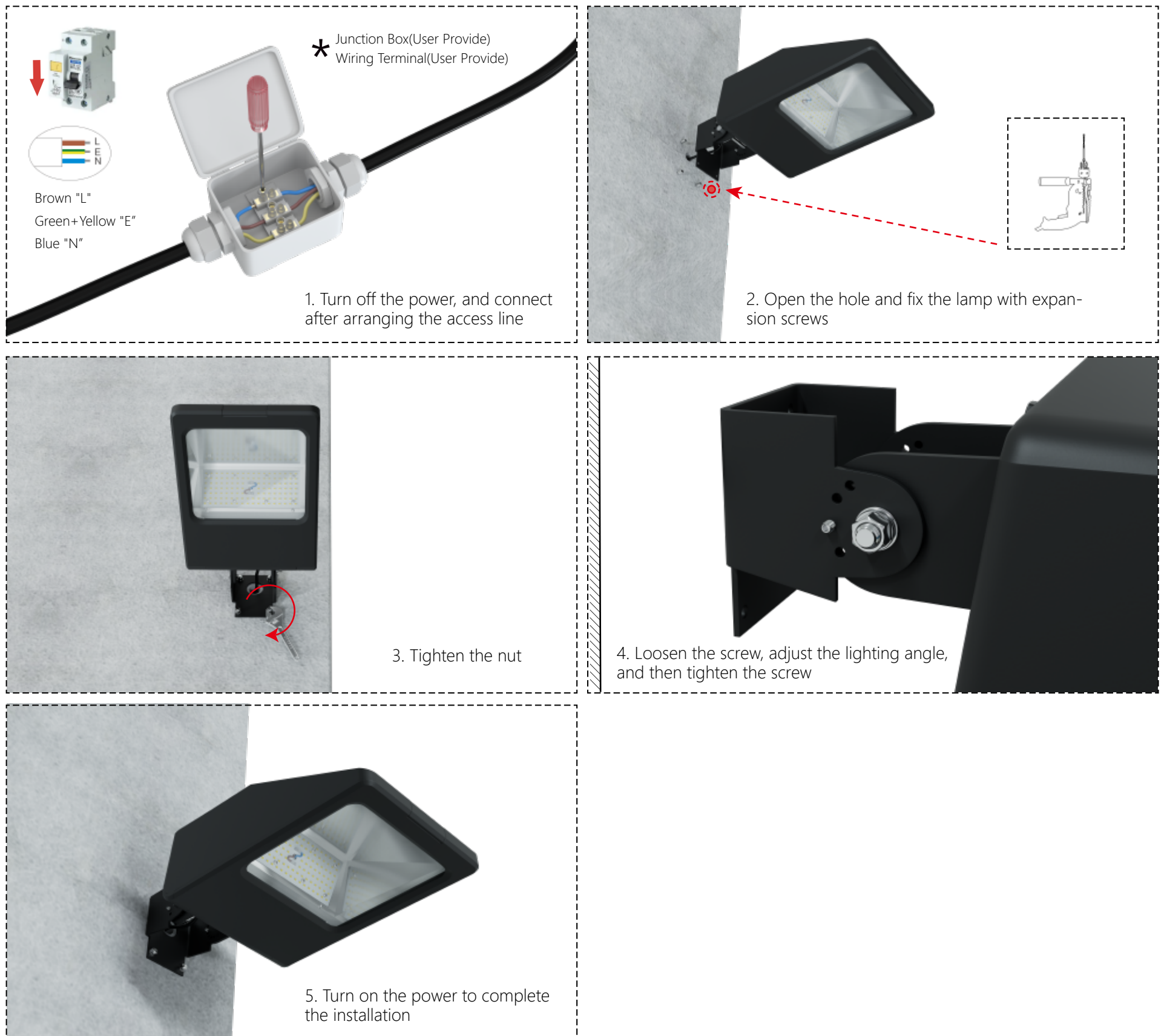
*** Note :** Please make sure the power off before operation, Installation must be performed by skilled electrician who are familiar with the requirements and proper installation methods of LED luminaire, in order to avoid damage or hazard;The external flexible cable or cord of this luminaire can not be replaced, if the cord is damaged, the luminaire must be destroyed,The light source contained in this luminaire shall only be replaced by a qualified person;

Custom accessory Installation Instructions:



✱ Note : Please make sure the power off before operation, Installation must be performed by skilled electrician who are familiar with the requirements and proper installation methods of LED luminaire, in order to avoid damage or hazard;The external flexible cable or cord of this luminaire can not be replaced, if the cord is damaged, the luminaire must be destroyed,The light source contained in this luminaire shall only be replaced by a qualified person;

Wall mounting Installation Instructions:



*** Note :** Please make sure the power off before operation, Installation must be performed by skilled electrician who are familiar with the requirements and proper installation methods of LED luminaire, in order to avoid damage or hazard;The external flexible cable or cord of this luminaire can not be replaced, if the cord is damaged, the luminaire must be destroyed,The light source contained in this luminaire shall only be replaced by a qualified person;

accessory:

A01



High mast mounting accessory (Optional)

A02



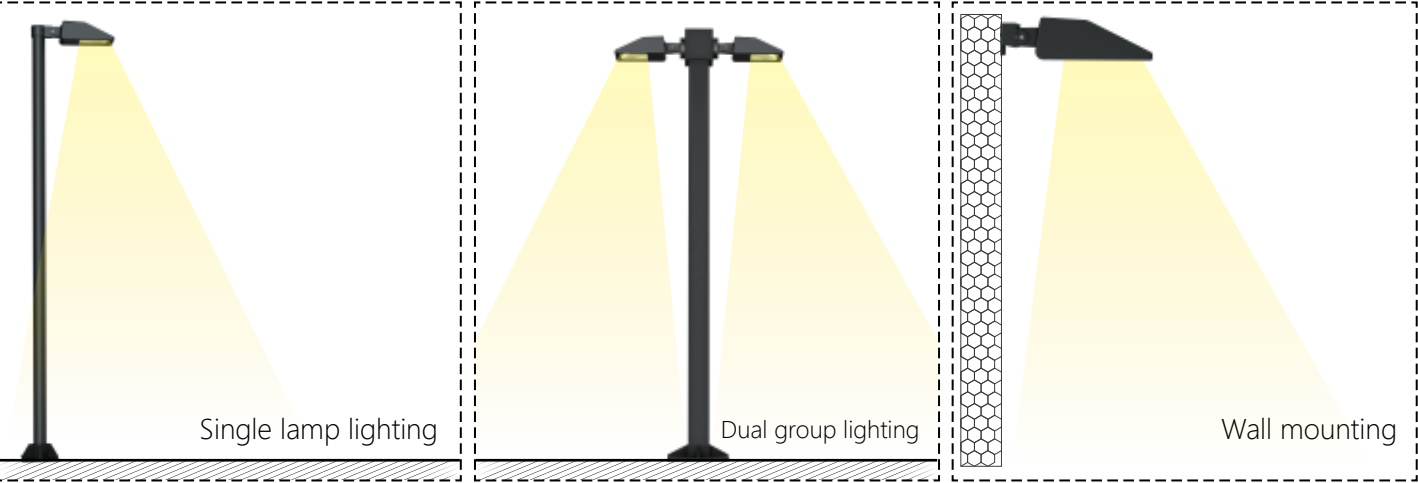
Custom accessory (Optional)

A03



Wall mounting accessory (Optional)

Installation method:



Points to note :

- 1. Power off before installation.
- 2. Do not use cleaners, abrasives or corrosive substances to clean LED lamps.
- 3. Please check the LED lamps regularly if there is dust or dirt accumulation, Clean if necessary. Contamination can lead to overheating and performance underClean the outside of LED lamps with a dry or wet cloth.
- 4.Check the cable connection of LED lamps regularly to make sure it is not damaged.

Storage and disposal :

- 1. The LED lamps should be stored in a dry and clean environ- ment with an ambient temperature of 15-60 degrees Celsius.
- 2. This LED product should not be used as a standard Waste treatment, It will be collected or taken to a recy- cling, proper disposal and environmental treatment center.

